

PLAN VIEW

Walker Modular Ltd.
Walker Group
Westmoreland House
Westmoreland Street
Hull
HU2 0DJ
Tel: 01482 590730
Fax: 01482 590739

Designer ID: GT
Scale: 1:10
Last amendment: 30/06/2006

All measurements are subject to amendment

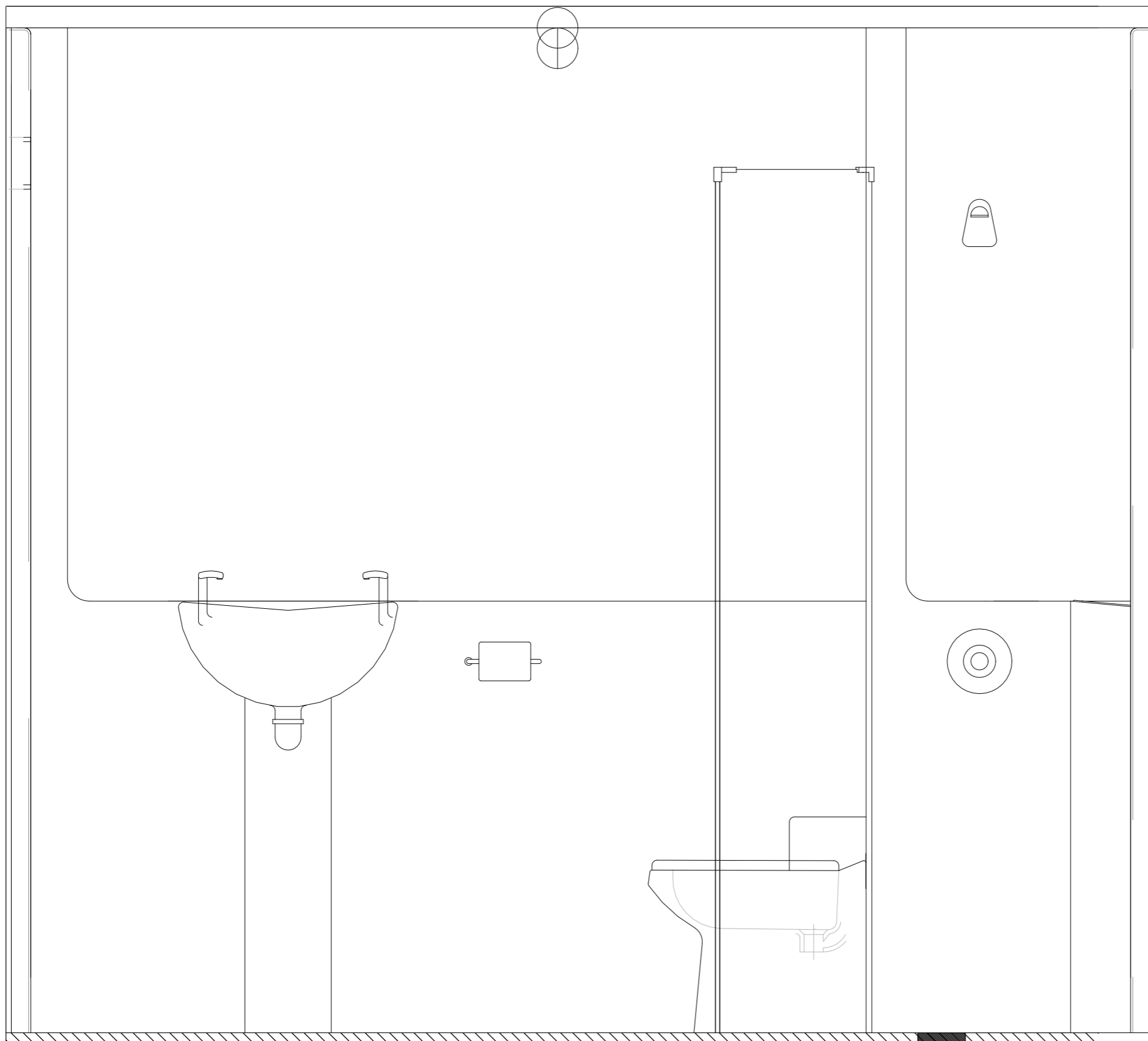
Do not scale from this drawing

All dimensions in mm

This drawing is protected by copyright and must not be used or reproduced without written consent of Douglas James Ltd (c).

Last amendment: 30/06/2006 Scale: 1:10

2400



ELEVATION A

Walker Modular Ltd.
Walker Group
Westmoreland House
Westmoreland Street
Hull
HU2 0DJ
Tel: 01482 590730
Fax: 01482 590739

Date: 21/08/2006
Designer ID: GT
Scale: 1:10
Last amendment: 30/06/2006

All measurements are subject to amendment

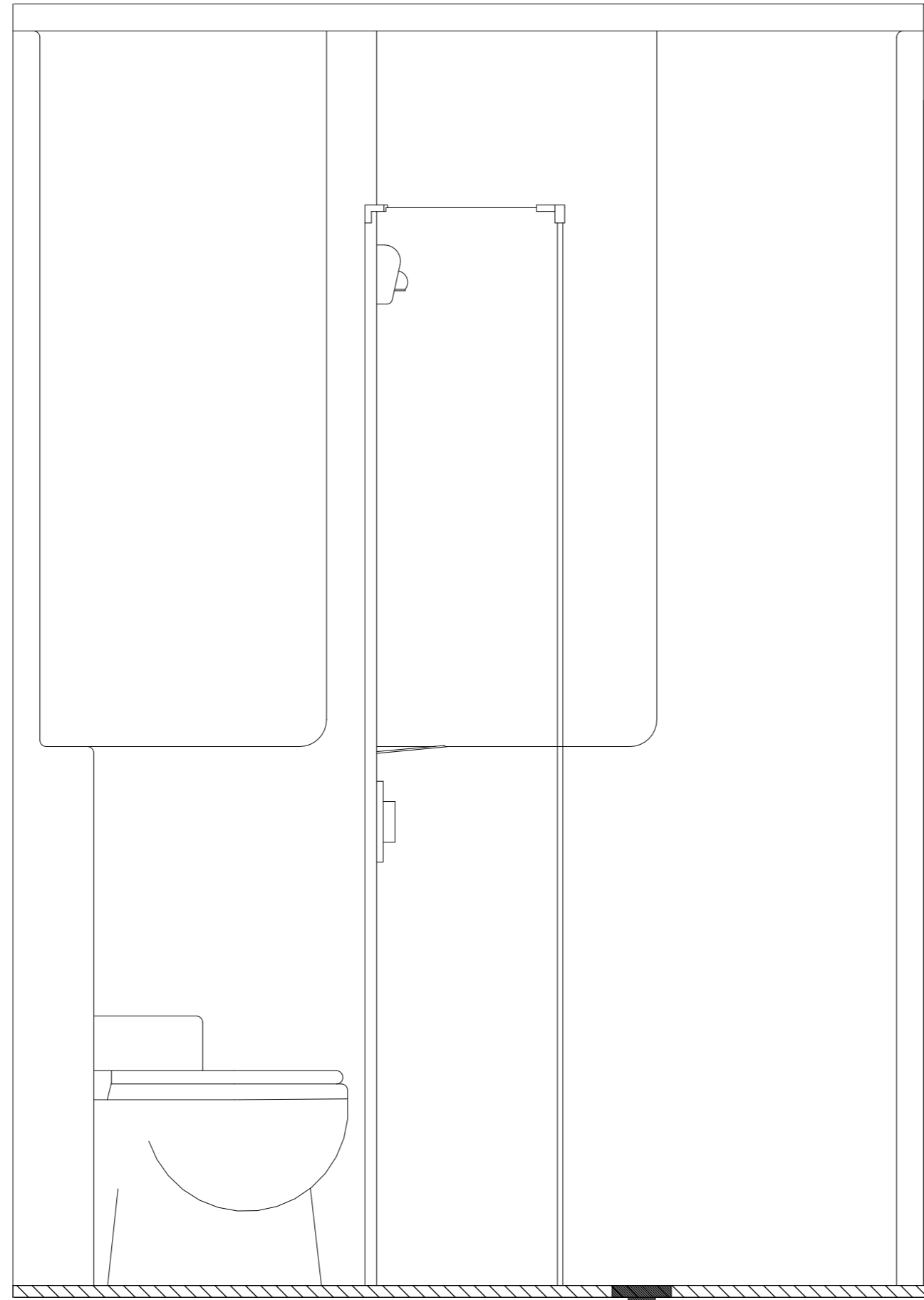
Do not scale from this drawing

All dimensions in mm

This drawing is protected by copyright and must not be used or reproduced without written consent of Douglas James Ltd (c).

Last amendment: 30/06/2006 Scale: 1:10

2400



50

22

ELEVATION D

Walker Modular Ltd.
Walker Group
Westmoreland House
Westmoreland Street
Hull
HU2 0DJ
Tel: 01482 590730
Fax: 01482 590739

Date: 21/08/2006
Designer ID: GT
Scale: 1:10
Last amendment: 30/06/2006

All measurements are subject to amendment

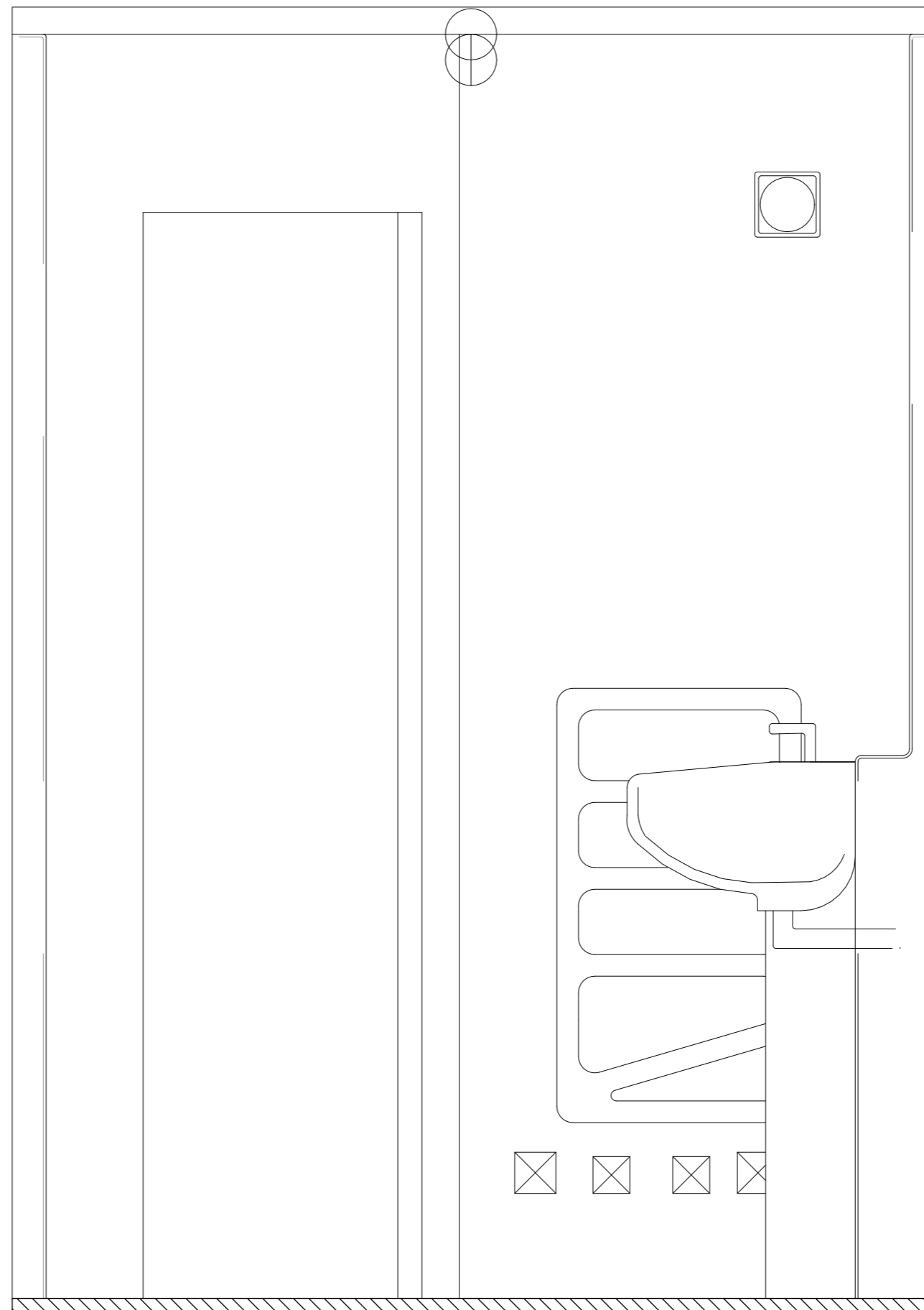
Do not scale from this drawing

All dimensions in mm

This drawing is protected by copyright and must not be used or reproduced without written consent of Douglas James Ltd (c).

| | |
|-------------------------------|----------------|
| Last amendment: 30/06/2006 | Scale: 1:10 |
|-------------------------------|----------------|

2400



ELEVATION C

Walker Modular Ltd.
Walker Group
Westmoreland House
Westmoreland Street
Hull
HU2 0DJ
Tel: 01482 590730
Fax: 01482 590739

Date: 21/08/2006
Designer ID: GT
Scale: 1:10
Last amendment: 30/06/2006

All measurements are subject to amendment

Do not scale from this drawing

All dimensions in mm

This drawing is protected by copyright and must not be used or reproduced without written consent of Douglas James Ltd (c).

| | |
|-------------------------------|----------------|
| Last amendment: 30/06/2006 | Scale: 1:10 |
|-------------------------------|----------------|